

Public School:

## CERECEDO

The group of school is formed by individual units in the four villages: Trobajo del Cerecedo, Vilecha, Grulleros and Vega and our aim is to give quality education and to create links between the school, the families and the councils to achieve the best possible teaching /learning process. We base our educational project on collaboration and respect between the family systems and the institutions so that there may be good coexistence.



## C. R. A. CRECEDO

Telephone:

987 260 836

Fax:

987 264 048

E-mail:

24017990@educa.jcyl.es

Web:

http://

cracerecedo.centros.educa.jcyl.es

## C. R. A. CRECEDO

Trobajo del Cerecedo

Vilecha

Grulleros

Vega de Infanzones



The rural group of schools "Cerecedo" has got 4 school: Trobajo del Cerecedo, Vilecha, Grulleros and Vega de Infanzones where children of 3 – 6 years old can attend infant school, and children of 6 – 12 years old can attend primary school. The school timetable is from 9.00a.m. to 2.00p.m. School dinners are from 2.00p.m. to 4.00p.m. From 4.00p.m. to 6.00p.m. there are extra-curricular activities.

CRA Cerecedo has got 140 students and 20 teachers.

# THE RURAL GROUP OF SCHOOL "CERECEDO"

## Trobajo del Cerecedo



It belongs to Leon town hall with 800 people.

It is about 5 km from León.

It is situated on the right Bernesga river, on the south of the capital.

Trobajo has got about 800 people, most of them work in small factories situated surrounding the city.

School is situated at the beginning of the village.

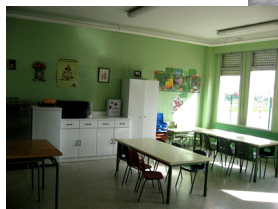
It has got 2 floors, with classes, offices and school canteen.

It has got a big playground with sport and green areas and a beautiful greenhouse.

There are 32 students in this school and three teachers.



Classroom of Primary



## Vilecha



It belongs to Onzonilla town hall with 650 people.

Old people work in the country although most of them work in factories or building houses.

The school is situated in the village centre.

It has got 2 floors, with several classes and a small playground.

There are 73 students in this school and five teachers.

Soon they will build us a bigger new school.



## Grulleros

It is a small village with only 350 people.

In Grulleros there is an old church, a park, a mill...

It's a very quiet place.

The school is situated in the center of the village, next to the park.

It has got three classrooms, a gymnasium and a playground.

The school has got 18 students and two teachers.



## Vega de Infanzones



Village: Vega de Infanzones  
Aerea photo

Vega de Infanzones is situated in the south of the city and It's about 14 km from Leon.

Grulleros, Villa de Soto and Vega de Infanzones belongs to Vega de Infanzones townhall.

Vega de Infanzones has got about 850 people, most of them work in the fields and farms.

The school is at the end of the village. It has got 2 floors, with two classes and a small playground.

There are 15 students in this school and two teachers.



Grulleros: park and mill

